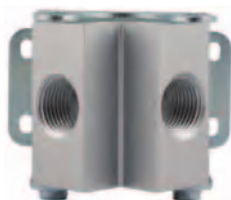




Tomas murales



90642

Repartidor
2 salidas

| Código | Ref. | Pack | ■ |
|-----------------|------------|------|---|
| 90642 1/2 1/2 2 | 9064200001 | 1 | |
| 90642 3/4 1/2 2 | 9064200002 | 1 | |



90647

Soporte
con
regleta

| Código | Ref. | Pack | ■ |
|-----------------|------------|------|---|
| 90647 1/2 3/8 2 | 9064700001 | 1 | |
| 90647 1/2 3/8 3 | 9064700002 | 1 | |



90644

Repartidor
4 salidas

| Código | Ref. | Pack | ■ |
|-----------------|------------|------|---|
| 90644 1/2 1/2 4 | 9064400001 | 1 | |
| 90644 3/4 1/2 4 | 9064400002 | 1 | |



90648

Soporte
con regleta
doble

| Código | Ref. | Pack | ■ |
|-----------------|------------|------|---|
| 90648 1/2 3/8 2 | 9064800001 | 1 | |
| 90648 1/2 3/8 3 | 9064800002 | 1 | |



90790

Regleta
simple
4 salidas

| Código | Ref. | Pack | ■ |
|-----------------|------------|------|---|
| 90790 3/4 1/2 | 9079000001 | 1 | |
| 90790 1" 1/2 | 9079000002 | 1 | |
| 90790 1"1/4 1/2 | 9079000003 | 1 | |

Redes de Aire Comprimido

Tomas murales



90600

Racor codo a fijación 1 salida

| Código | Ref. | Pack | ■ |
|--------------|------------|------|---|
| 90600 20 1/2 | 9060000001 | 4 | |
| 90600 25 3/4 | 9060000002 | 3 | |
| 90600 32 1" | 9060000003 | 2 | |



90660

Repartidor a 2 vías inclinado Tubo - Hembra

| Código | Ref. | Pack | ■ |
|--------------|------------|------|---|
| 90660 20 1/2 | 9066000001 | 2 | |
| 90660 25 1/2 | 9066000002 | 2 | |



90602

Repartidor 2 salidas ajustable

| Código | Ref. | Pack | ■ |
|--------------|------------|------|---|
| 90602 20 1/2 | 9060200001 | 2 | |
| 90602 25 1/2 | 9060200002 | 2 | |



90662

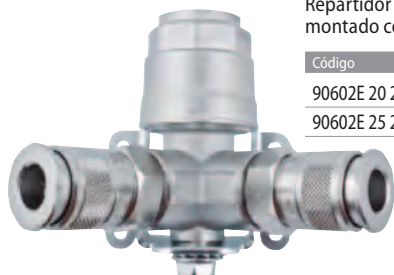
Repartidor a 2 vías inclinado Hembra

| Código | Ref. | Pack | ■ |
|---------------|------------|------|---|
| 90662 1/2 1/2 | 9066200001 | 2 | |
| 90662 1/2 3/4 | 9066200002 | 2 | |

90602E

Repartidor 2 salidas montado con Enchufes Rápidos

| Código | Ref. | Pack | ■ |
|-------------|-------------|------|---|
| 90602E 20 2 | 90602E 20 2 | 1 | |
| 90602E 25 2 | 90602E 20 2 | 1 | |



90642E

Repartidor 2 salidas montado con Enchufes Rápidos

| Código | Ref. | Pack | ■ |
|-------------|------------|------|---|
| 90642E 20 2 | BF06500001 | 1 | |
| 90642E 25 2 | BF06500002 | 1 | |



90642VE

Repartidor 2 salidas montado con Enchufes Rápidos y Válvula de corte

| Código | Ref. | Pack | ■ |
|--------------|------------|------|---|
| 90642VE 20 2 | BF06600001 | 1 | |
| 90642VE 25 2 | BF06600002 | 1 | |



90664

Repartidor a 2 vías inclinado con válvula Hembra

| Código | Ref. | Pack | ■ |
|--------------|------------|------|---|
| 90664 20 1/2 | 9066400001 | 2 | |
| 90664 25 1/2 | 9066400002 | 2 | |



Orientable